



Accredited Testing Laboratory No. 1007.7

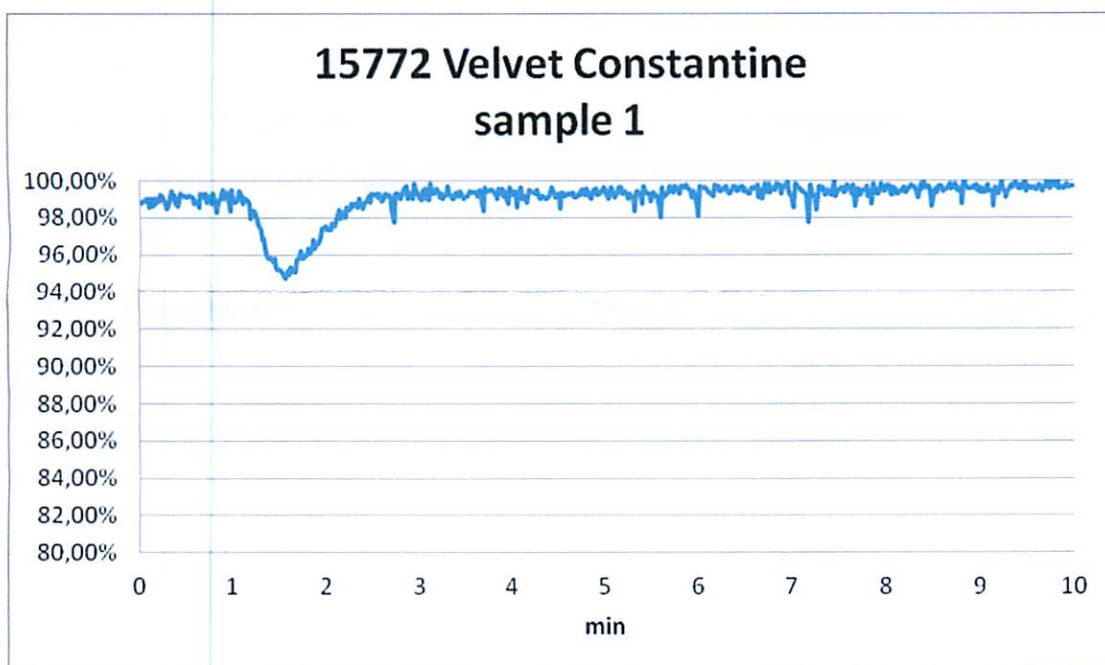
TEST REPORT No. 15772
 on Fire and Technical Characteristics



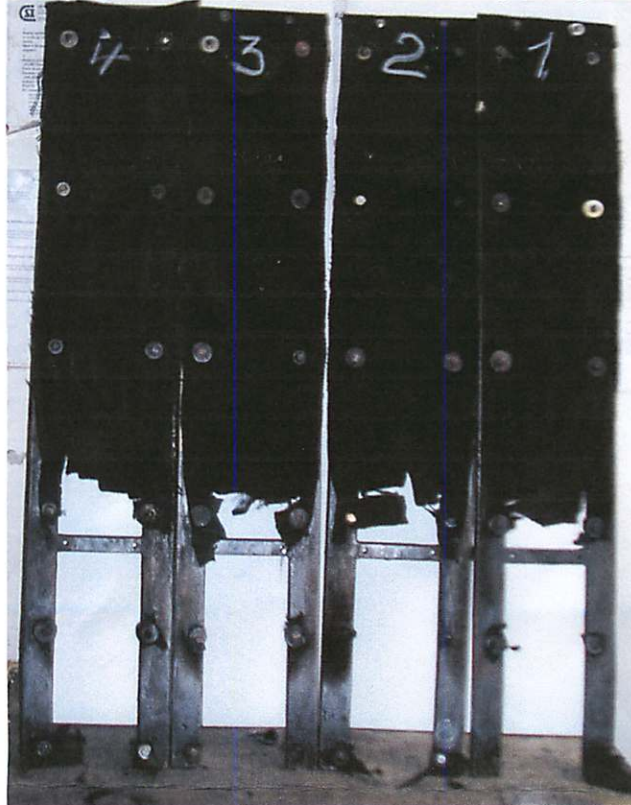
Our ref.: PTL – 259/11		Number of pages: 3	
THE TEST ITEM			
Product name: Velvet BW-Samt 350-360gr/qm			
Manufacturer: See sponsor			
Composition: 100 % cotton 100% Baumwolle			
Appearance: Black velvet of thickness 0,8 mm. Mass per unit area 360 g/m ² .			
Fixing of the test specimens: Fixed on the metal holder according to DIN 4102-15.			
Date of receipt of the sample: 2011-11-09 Sampling: The samples were delivered by the sponsor			
Date of realization of tests: 2011-12-09			
TEST METHOD:			
DIN 4102-1:1998 Fire behaviour of building materials and building components - Part 1: Building materials; concepts, requirements and tests.			
DIN 4102-16:1998 Fire behaviour of building materials and building components - Part 16: "Brandschacht" tests.			
DIN 4102-15:1990 Fire behaviour of building materials and elements "Brandschacht".			
Conditioning: 10 days at temperature T = (23±2) °C and relative humidity at RV = (50±5) %			
MEASURED VALUES AND TEST RESULTS			
Measuring and observations	Test specimen No.		
	1	2	3
Residual length of the every test specimen [cm]	62; 64; 61; 62	60; 63; 64; 62	61; 62; 61; 62
Residual length average value of the test specimen [cm]	62,8	62,3	61,5
The highest smoke temperature [°C]	98	101	94
Time to accomplish of the highest temperature of the smoke [min:s]	2:02	2:14	1:59
The highest flame level above the bottom edge of the test specimen [cm]	35	40	39

Smoke production	[%.min]	9,7	8,8	9,2
Maximum light attenuation	[%]	5,3	5,5	5,7
Time to accomplish the maximum smoke density	[s]	93	112	114
Time of sustained burning after end of test	[s]	3	5	4
Time of gloving after end of test	[s]	0	0	0
Flaming droplets / particles	[yes/no]	no	no	no

Light attenuation curve:



Photograph of test specimens after testing (sample 1):

**Conclusion:**

The tested sample of Velvet Constantin **does comply** with requirements given in the standard DIN 4102 – 1 for classification:

DIN 4102-B1

The test results relate to the behaviour of the test specimen of a product under the particular conditions of the test; they are not intended to be the sole criterion for assessing the potential fire hazard of the product of use. The results of tests are concerned only with the subject of testing. The protocol shall not be reproduced except 300/4x4-02 in full without the written approval of the testing laboratory.

Responsible person: Vít Slaboch

Date: 2011-12-14

